


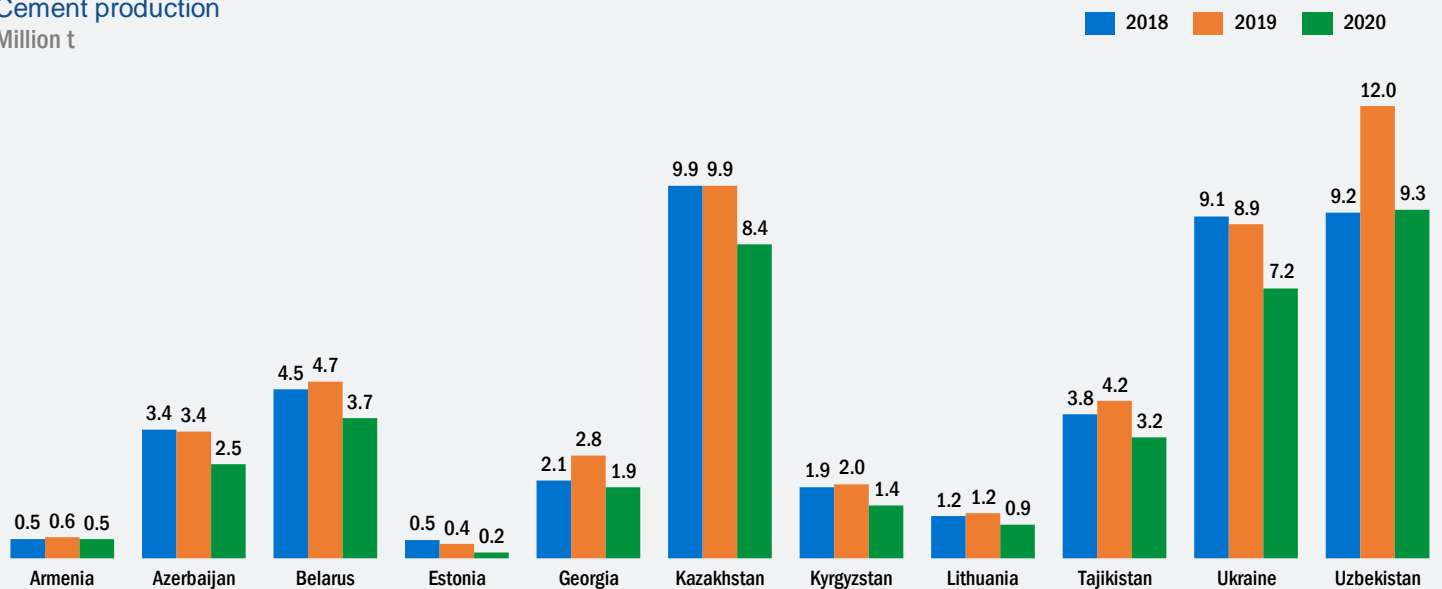
## Key indicators of cement and construction industry in FSU countries for 12M 2020

Based on data from the national statistical offices, committees and services of Azerbaijan, Armenia, Belarus, Georgia, Kazakhstan, Kyrgyzstan, Latvia, Lithuania, Moldova, Tajikistan, Uzbekistan, Ukraine and Estonia

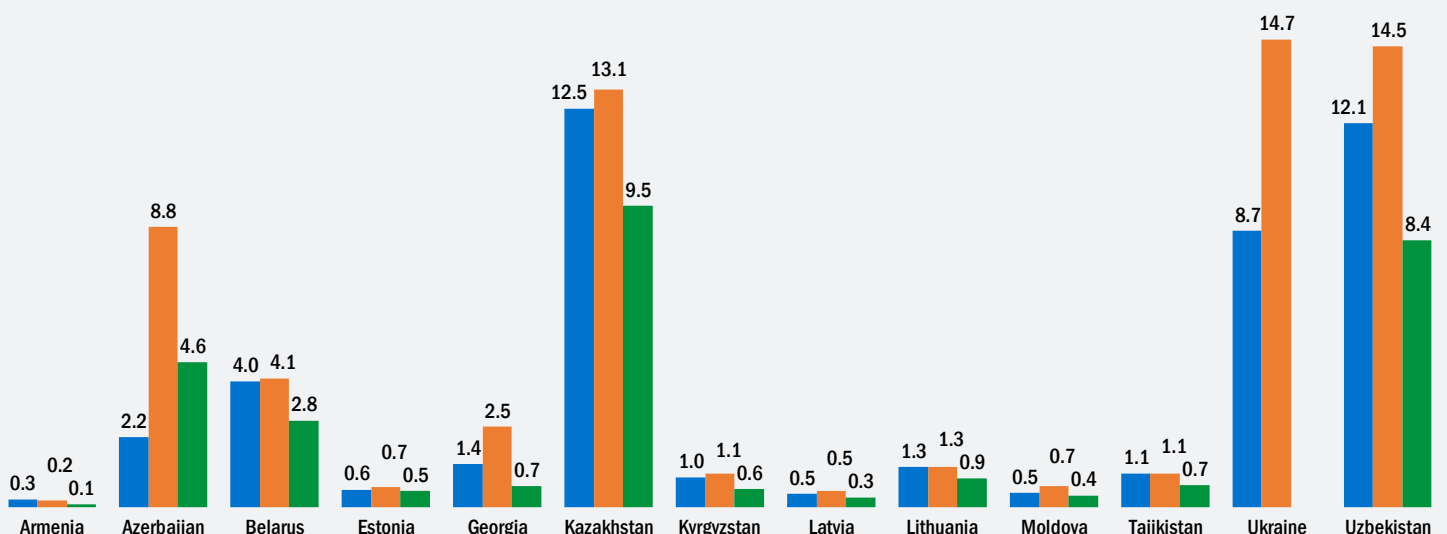
 [Open in browser](#)

 [Print](#)

Cement production  
Million t



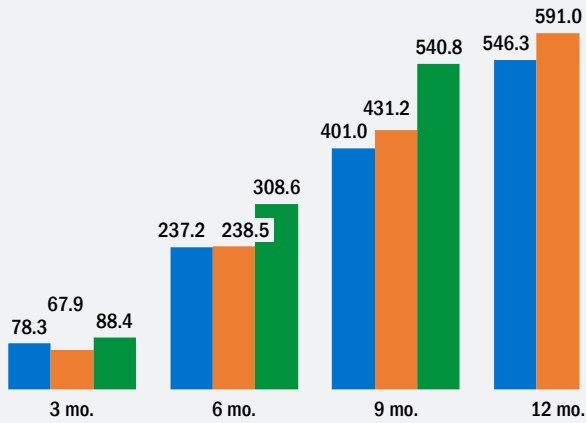
Total area of commissioned housing  
Million m<sup>2</sup>



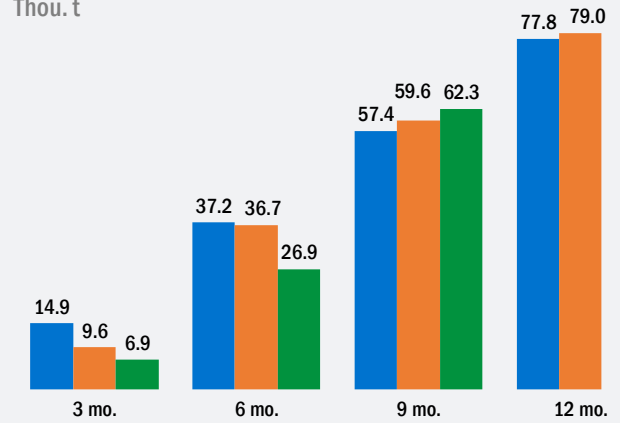


2018 2019 2020

## Cement production Thou. t



## Production of prefabricated reinforced concrete structures and parts Thou. t



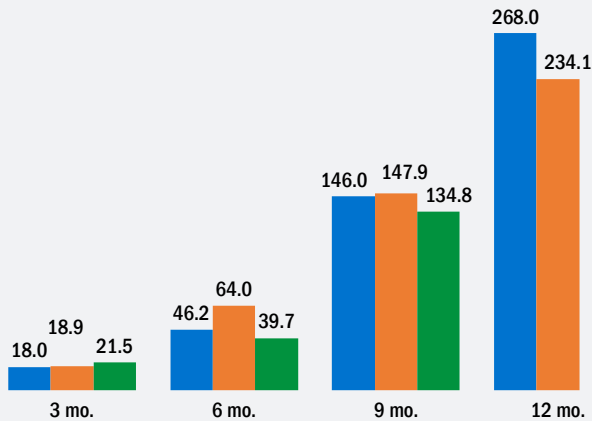
## Cost of construction works Billion AMD

	3 mo.	6 mo.	9 mo.	12 mo.
2018	44.5	127.8	245.9	422.3
2019	47.7	131.0	251.8	434.6
2020	43.9	105.8	224.3	-

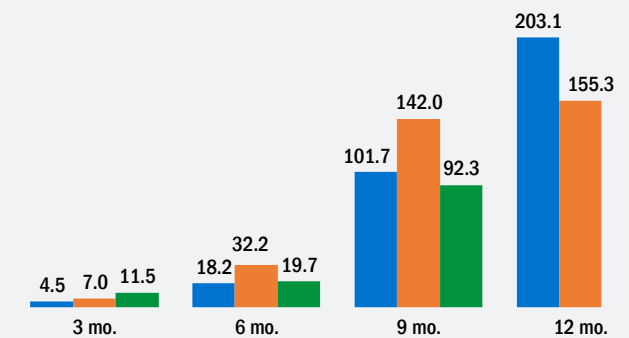
## Weighted average rate calculated according to the Central Bank of the Russian Federation RUB/100 AMD

	3 mo.	6 mo.	9 mo.	12 mo.
2018	11.8	12.3	12.7	13.0
2019	13.6	13.5	13.5	13.5
2020	13.8	14.4	14.6	-

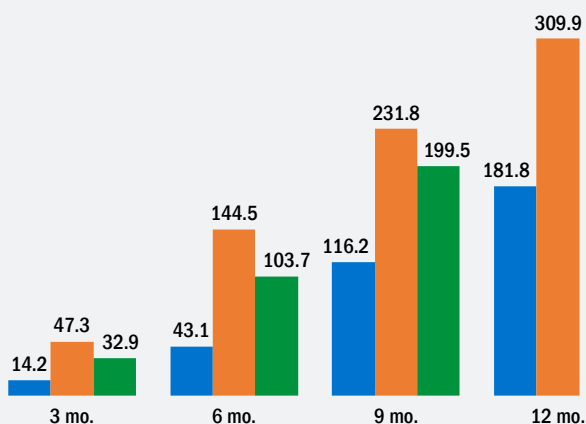
## Total area of commissioned housing Thou. m<sup>2</sup>



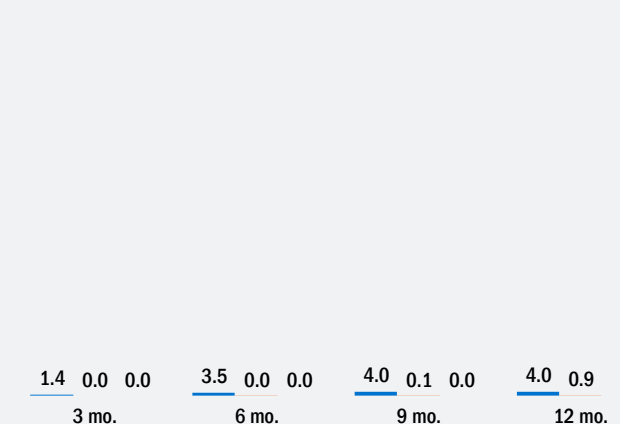
## Total area of commissioned housing in the city of Yerevan Thou. m<sup>2</sup>



## Cement import Thou. t



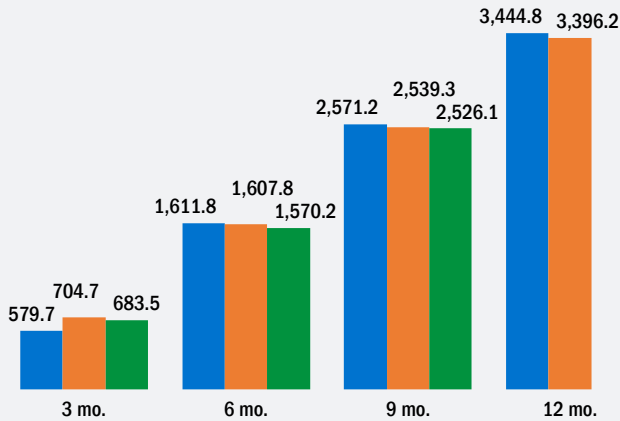
## Cement export Thou. t



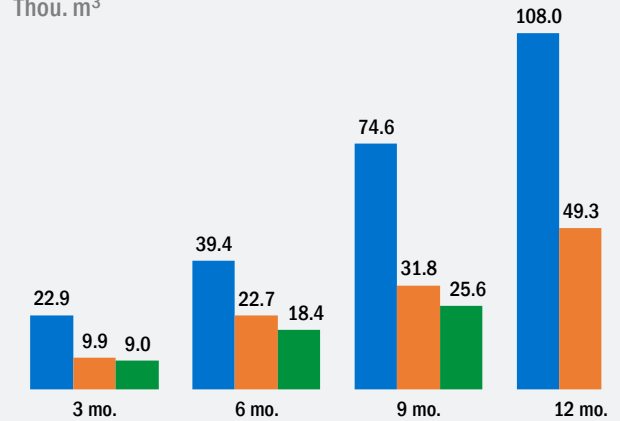


2018 2019 2020

Cement production  
Thou. t



Production of prefabricated reinforced concrete structures and parts  
Thou. m<sup>3</sup>



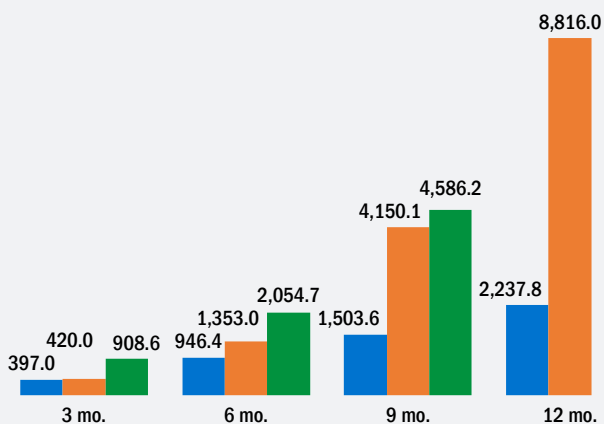
Average retail cement prices  
AZN/50 kg

	3 mo.	6 mo.	9 mo.	12 mo.
2018	6.9	7.0	7.0	7.1
2019	7.4	7.6	7.6	7.6
2020	7.5	7.5	7.5	-

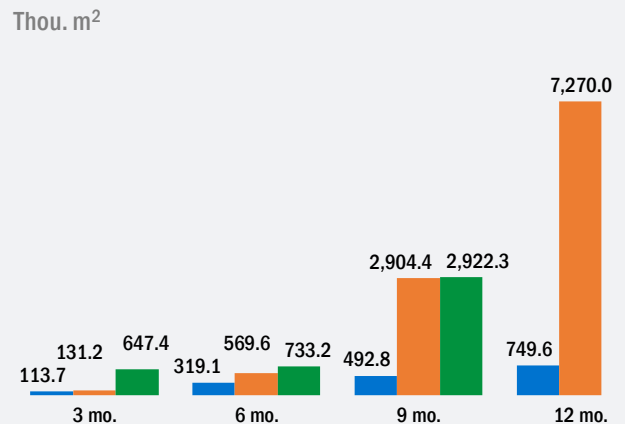
Weighted average rate calculated according to the Central Bank of the Russian Federation RUB/AZN

	3 mo.	6 mo.	9 mo.	12 mo.
2018	33.4	34.9	36.1	36.9
2019	39.0	38.5	38.4	38.2
2020	39.1	40.9	41.7	-

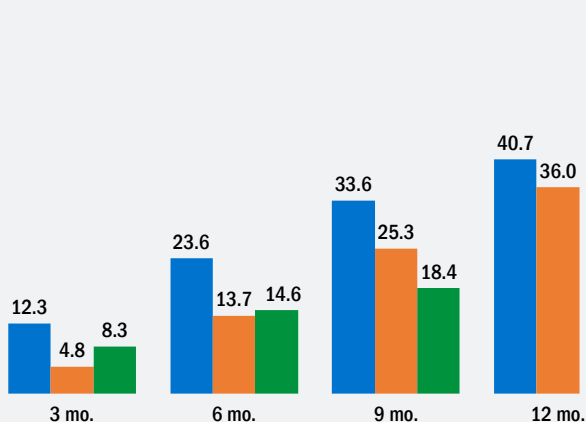
Total area of commissioned housing  
Thou. m<sup>2</sup>



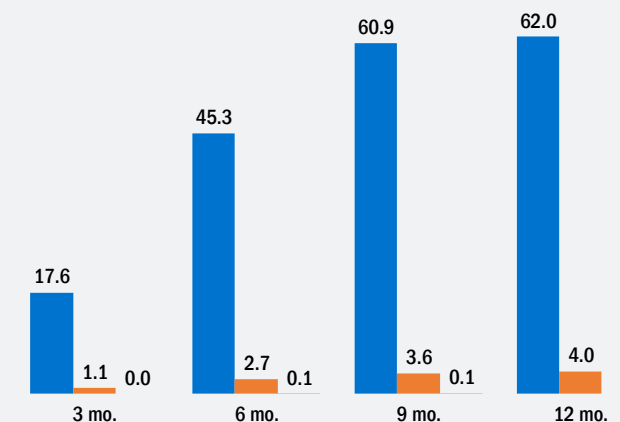
Total area of commissioned housing in the city of Baku  
Thou. m<sup>2</sup>



Cement import  
Thou. t



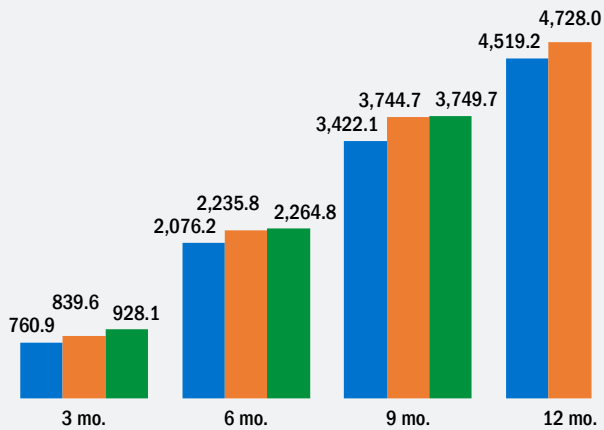
Cement export  
Thou. t



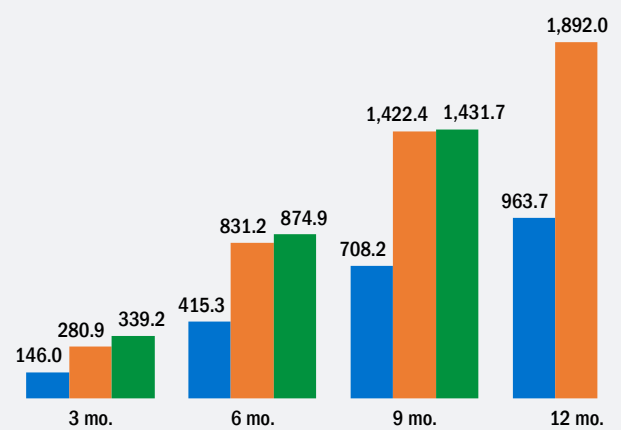


2018 2019 2020

## Cement production Thou. t



## Ready-mixed concrete production Thou. m<sup>3</sup>



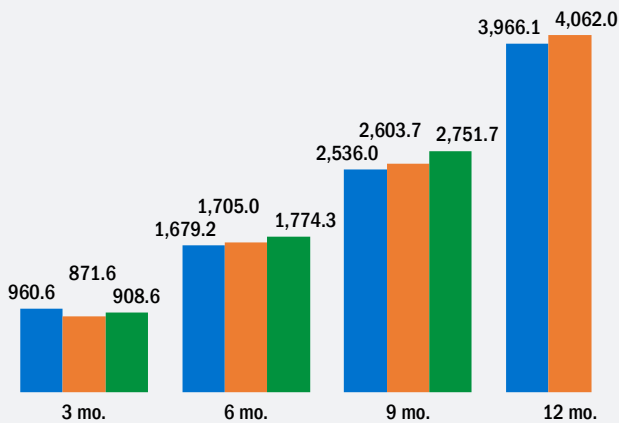
## Total investment in the housing construction Billion BYN

	3 mo.	6 mo.	9 mo.	12 mo.
2018	1.0	2.0	2.3	4.6
2019	1.2	2.4	3.7	5.3
2020	1.3	2.6	4.1	-

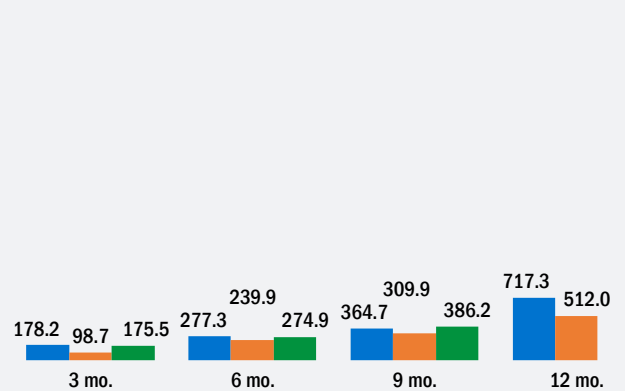
## Weighted average rate calculated according to the Central Bank of the Russian Federation RUB/BYN

	3 mo.	6 mo.	9 mo.	12 mo.
2018	28.8	29.9	30.6	30.8
2019	30.8	30.8	31.0	31.0
2020	29.6	29.7	29.6	-

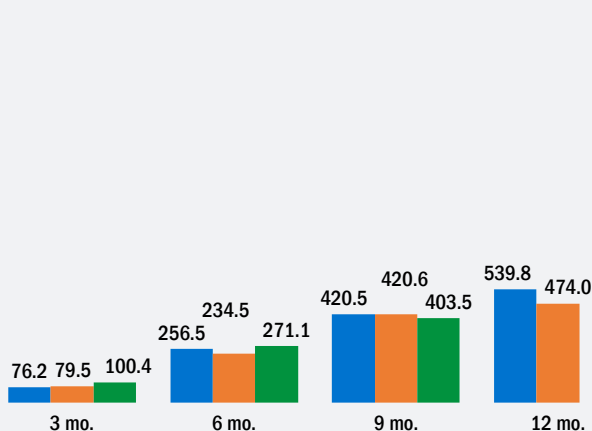
## Total area of commissioned housing Thou. m<sup>2</sup>



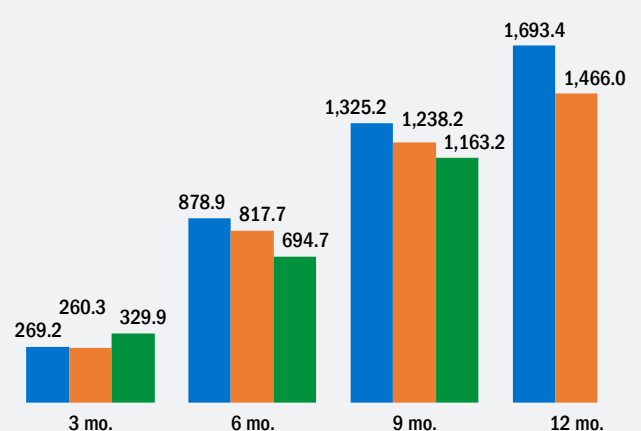
## Total area of commissioned housing in the city of Minsk Thou. m<sup>2</sup>



## Cement import Thou. t



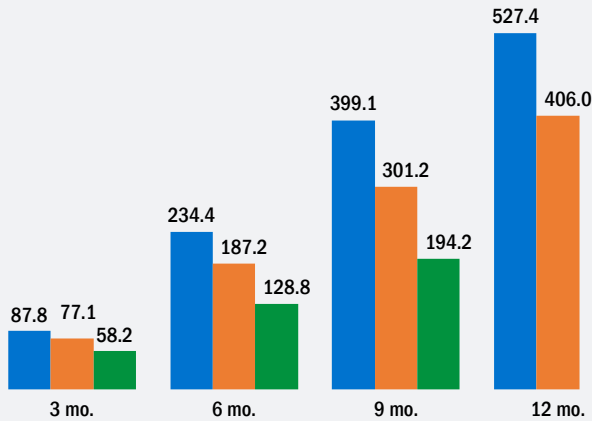
## Cement export Thou. t



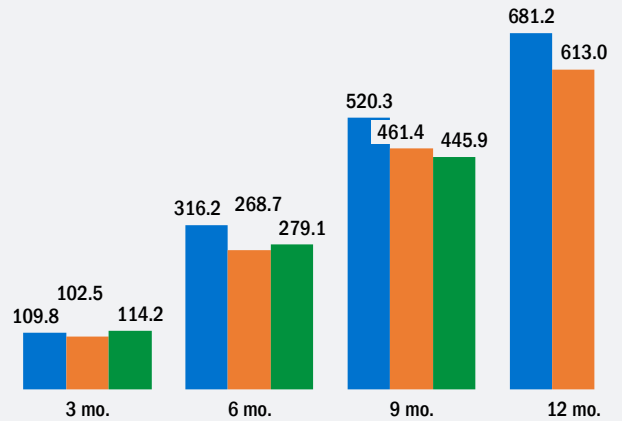


2018 2019 2020

## Cement production Thou. t



## Ready-mixed concrete production Thou. m<sup>3</sup>



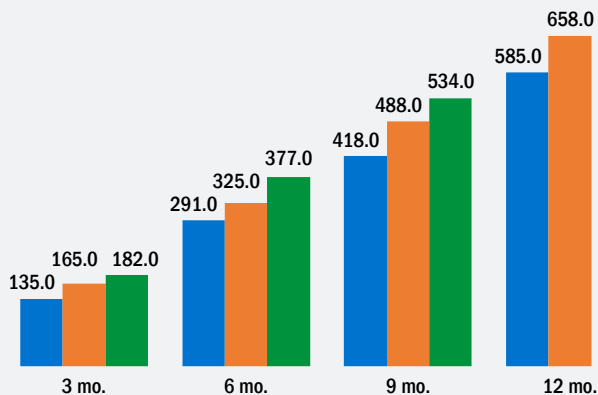
## Cost of construction works Million EUR

	3 mo.	6 mo.	9 mo.	12 mo.
2018	811.9	1,950.8	3,317.5	4,530.4
2019	850.1	1,983.5	3,387.1	4,730.9
2020	955.5	2,065.0	3,249.1	-

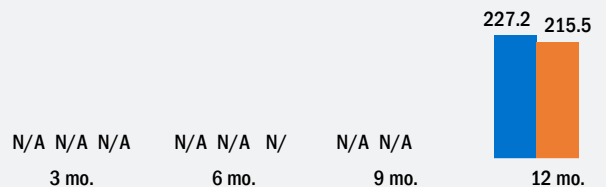
## Weighted average rate calculated according to the Central Bank of the Russian Federation RUB/EUR

	3 mo.	6 mo.	9 mo.	12 mo.
2018	69.9	71.8	73.3	74.0
2019	75.2	73.8	73.2	72.5
2020	73.2	76.4	79.6	-

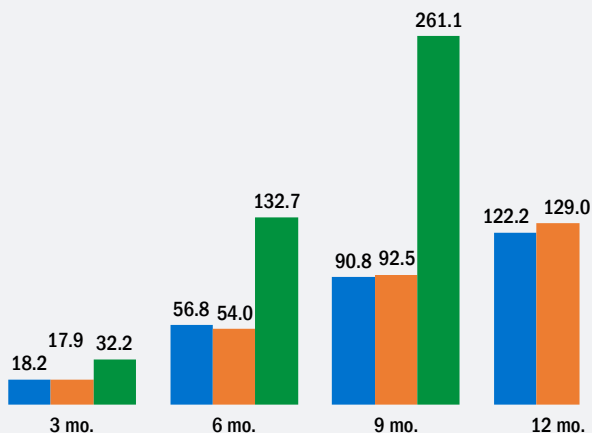
## Total area of commissioned housing Thou. m<sup>2</sup>



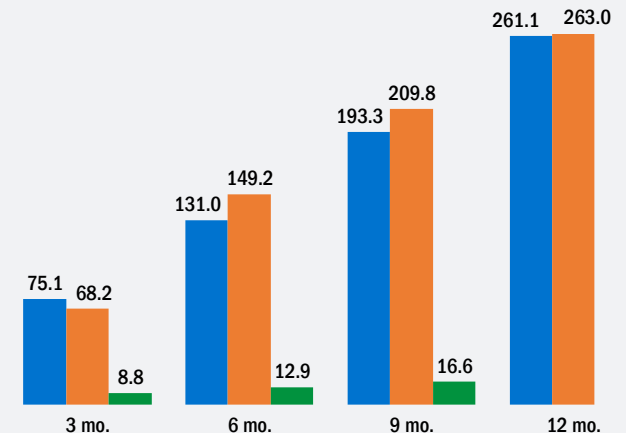
## Total area of commissioned housing in the city of Tallinn Thou. m<sup>2</sup>



## Cement import Thou. t



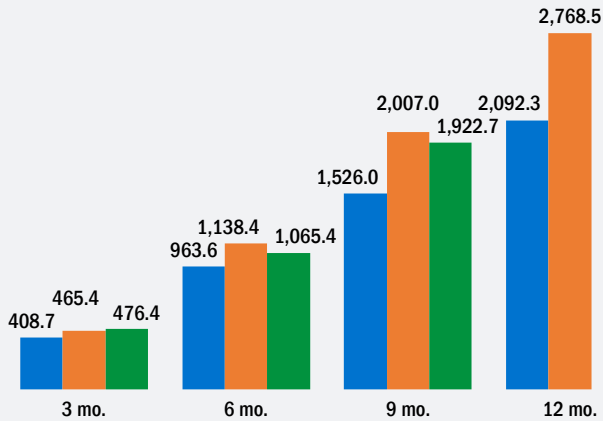
## Cement export Thou. t



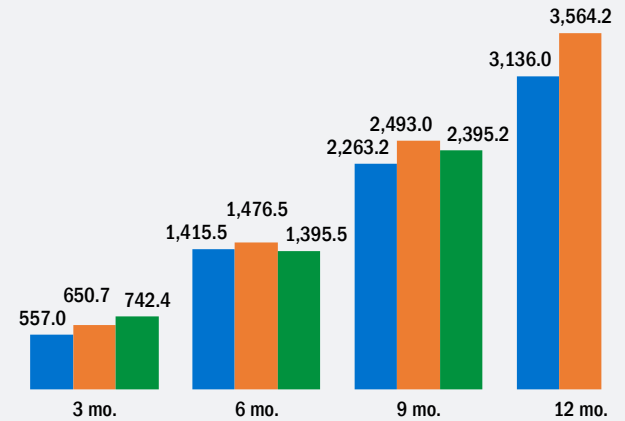


2018 2019 2020

## Cement production Thou. t



## Ready-mixed concrete production Thou. m<sup>3</sup>



## Average retail cement prices GEL/1 kg

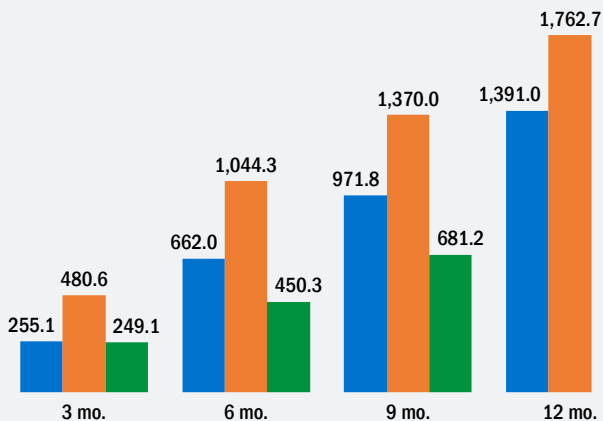
	3 mo.	6 mo.	9 mo.	12 mo.
2018	0.22	0.22	0.22	0.23
2019	0.24	0.25	0.25	0.25
2020	0.25	0.26	0.26	-

## GEL rate according to the Central Bank of Georgia

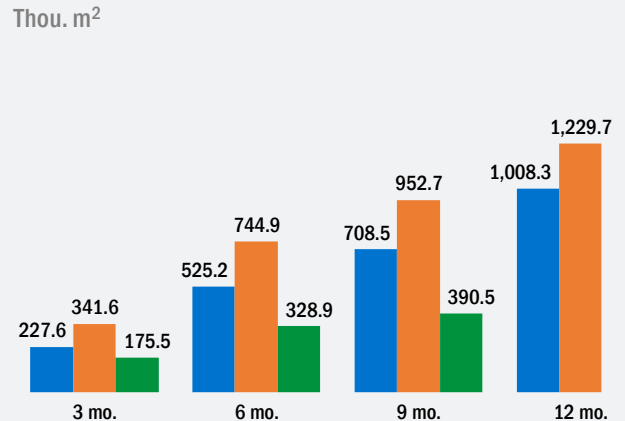
As of September 30, 2020

- 100 RUB/4.21 GEL
- 1 USD/3.27 GEL
- 1 EUR/3.84 GEL

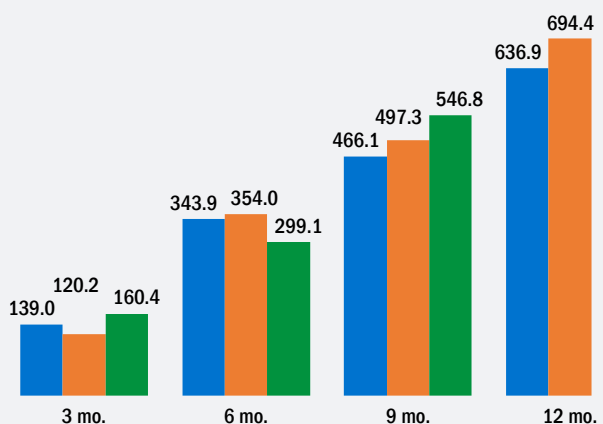
## Total area of commissioned housing Thou. m<sup>2</sup>



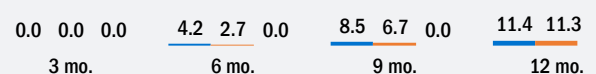
## Total area of commissioned housing in the city of Tbilisi Thou. m<sup>2</sup>



## Cement import Thou. t



## Cement export Thou. t

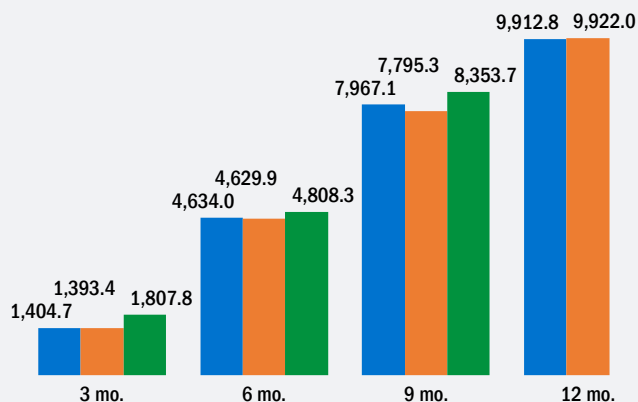




2018 2019 2020

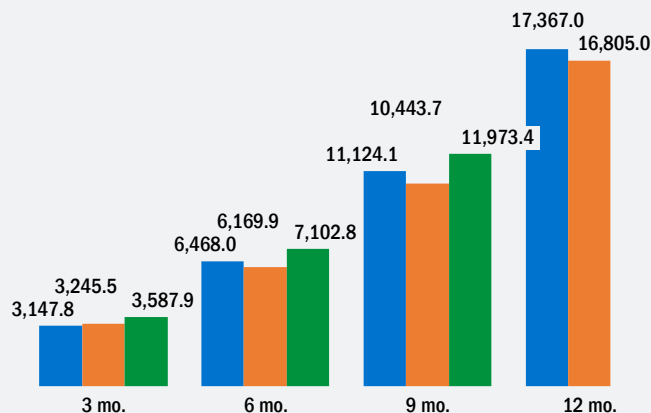
## Cement production

Thou. t



## Ready-mixed concrete production

Thou. t



## Average producer cement prices

Thou. KZT/1 t

	3 mo.	6 mo.	9 mo.	12 mo.
2018	13.7	14.6	15.9	16.7
2019	17.4	17.9	18.2	18.0
2020	17.5	17.6	17.8	-

## Average producer concrete prices

Thou. KZT/1 t

	3 mo.	6 mo.	9 mo.	12 mo.
2018	6.2	6.2	6.4	6.5
2019	6.8	7.0	7.2	7.2
2020	7.4	7.4	7.5	-

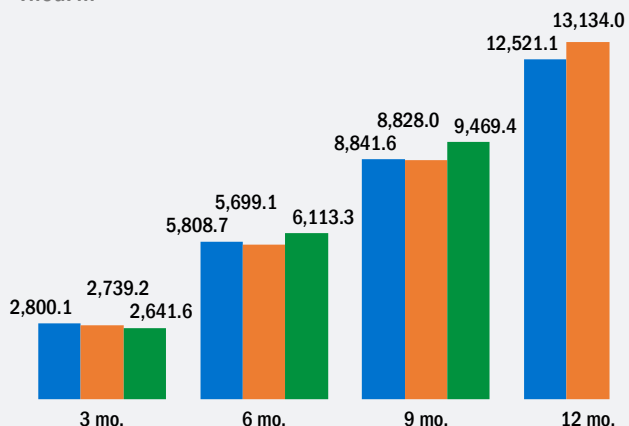
## Weighted average rate calculated according to the Central Bank of the Russian Federation

RUB/100 KZT

	3 mo.	6 mo.	9 mo.	12 mo.
2018	17.6	18.2	18.3	18.2
2019	17.5	17.2	17.0	16.9
2020	16.9	17.1	17.3	-

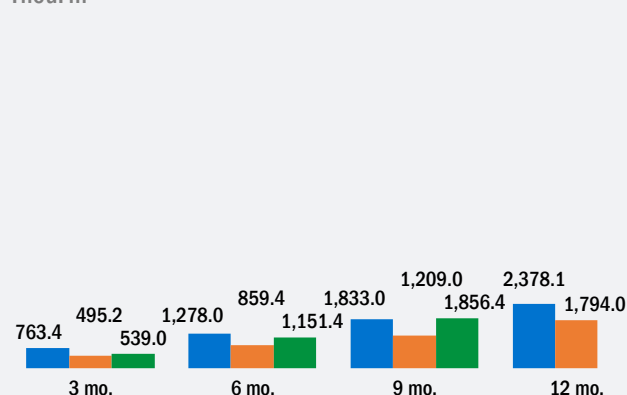
## Total area of commissioned housing

Thou. m<sup>2</sup>



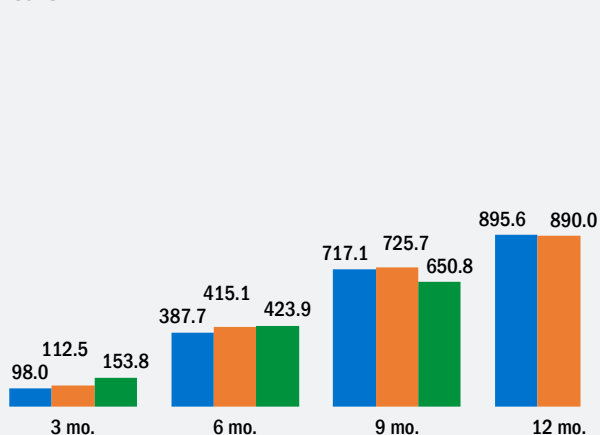
## Total area of commissioned housing in the city of Nur-Sultan

Thou. m<sup>2</sup>



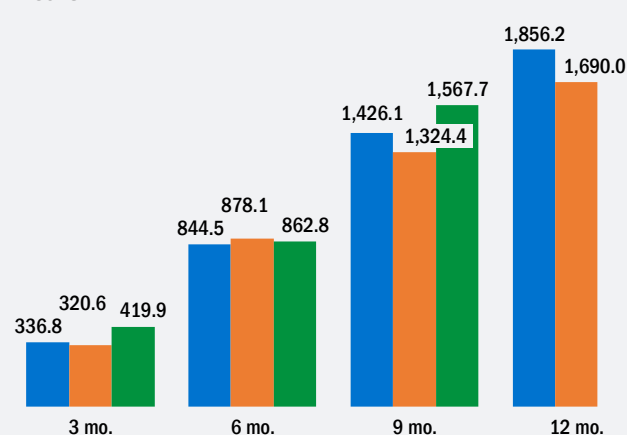
## Cement import

Thou. t



## Cement export

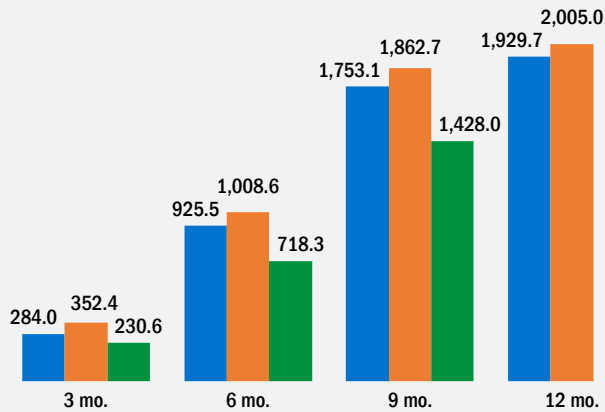
Thou. t



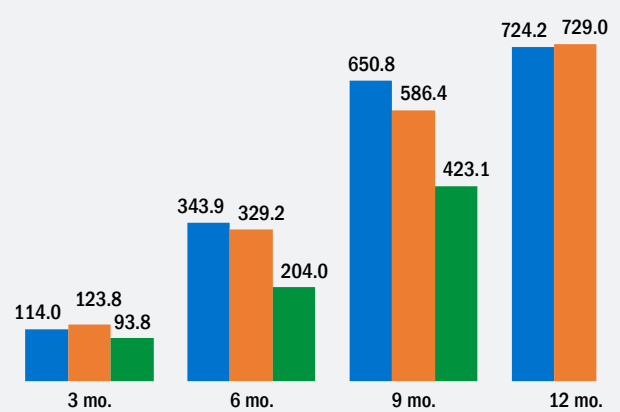


2018 2019 2020

Cement production  
Thou. t



Ready-mixed concrete production  
Thou. t



Average retail cement prices  
KGS/50 kg

	3 mo.	6 mo.	9 mo.	12 mo.
2018	267.6	264.5	269.5	273.0
2019	290.1	287.5	287.4	282.5
2020	278.5	280.8	283.9	-

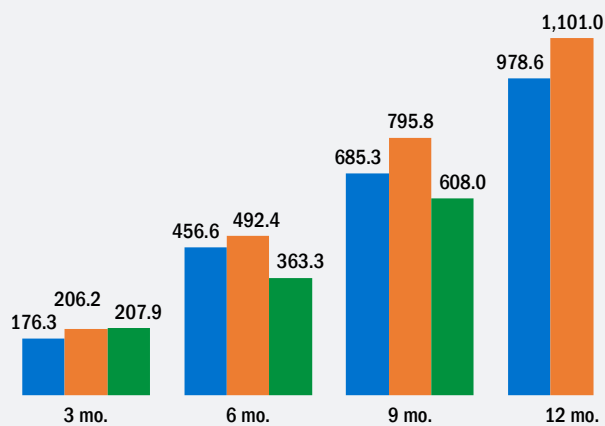
Average producer cement prices  
KGS/1 t

	3 mo.	6 mo.	9 mo.	12 mo.
2018	4,085.8	4,287.2	4,396.4	4,440.8
2019	4,485.1	4,507.6	4,530.0	4,574.0
2020	4,249.8	4,298.0	4,579.0	-

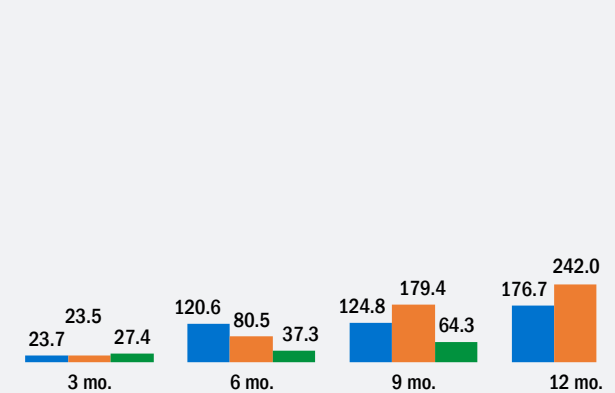
Weighted average rate calculated according to the Central Bank of the Russian Federation  
RUB/10 KGS

	3 mo.	6 mo.	9 mo.	12 mo.
2018	8.3	8.7	9.0	9.1
2019	9.5	9.4	9.3	9.3
2020	9.4	9.4	9.4	-

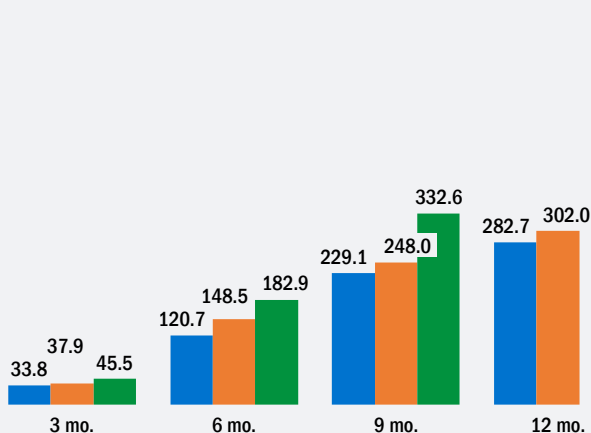
Total area of commissioned housing  
Thou. m<sup>2</sup>



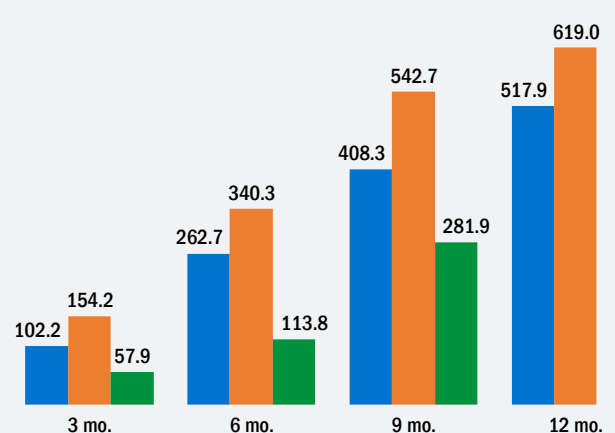
Total area of commissioned housing in the city of Bishkek  
Thou. m<sup>2</sup>



Cement import  
Thou. t



Cement export  
Thou. t

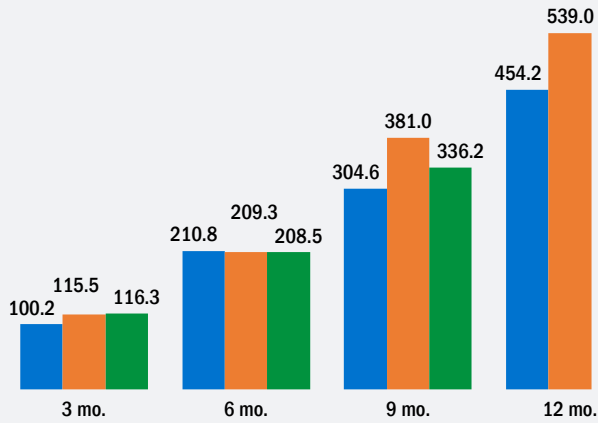




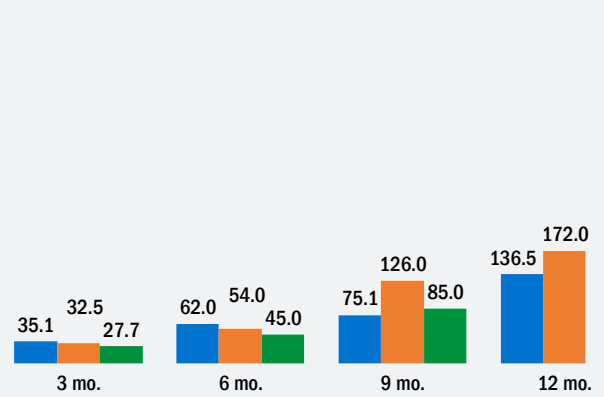


2018 2019 2020

Total area of commissioned housing  
Thou. m<sup>2</sup>



Total area of commissioned housing in the city of Riga  
Thou. m<sup>2</sup>



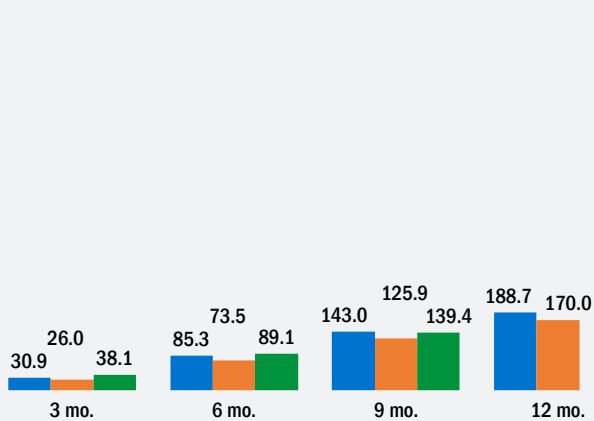
Cost of construction works  
Million EUR

	3 mo.	6 mo.	9 mo.	12 mo.
2018	312.7	842.5	1,511.4	2,187.1
2019	354.8	907.9	1,637.9	2,342.4
2020	414.8	967.7	1,700.0	-

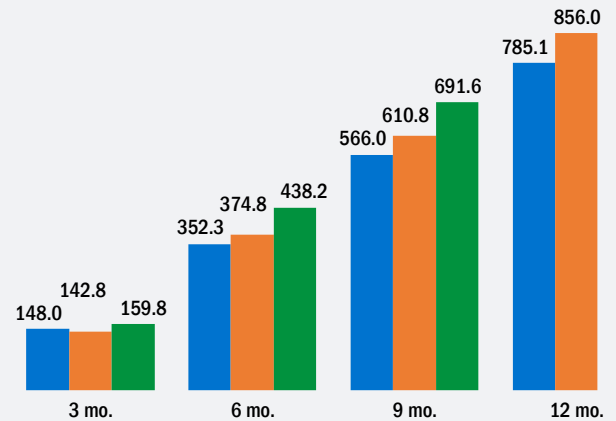
Weighted average rate calculated according to the Central Bank of the Russian Federation RUB/EUR

	3 mo.	6 mo.	9 mo.	12 mo.
2018	69.9	71.8	73.3	74.0
2019	75.2	73.8	73.2	72.5
2020	73.2	76.4	79.6	-

Cement import  
Thou. t



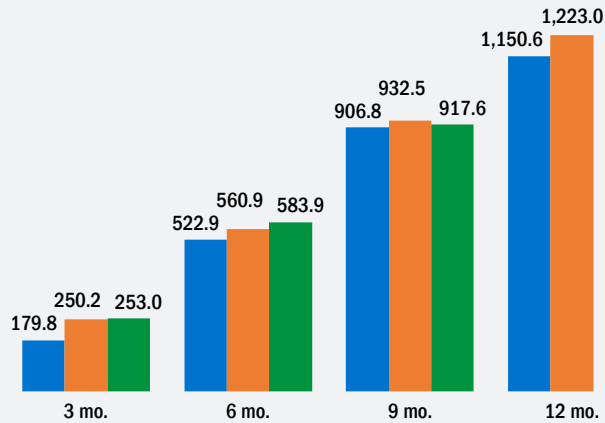
Cement export  
Thou. t



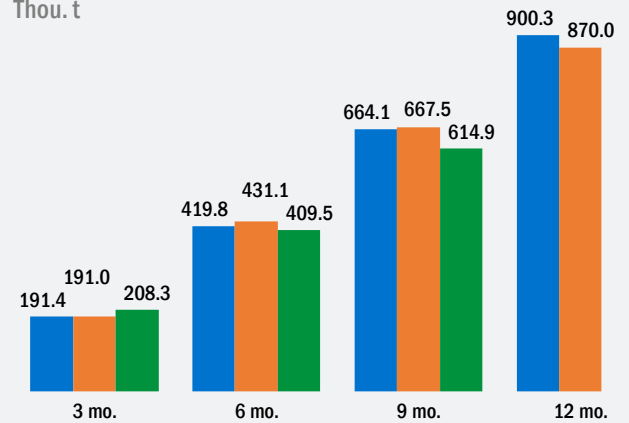


2018 2019 2020

## Cement production Thou. t



## Production of prefabricated reinforced concrete structures and parts Thou. t



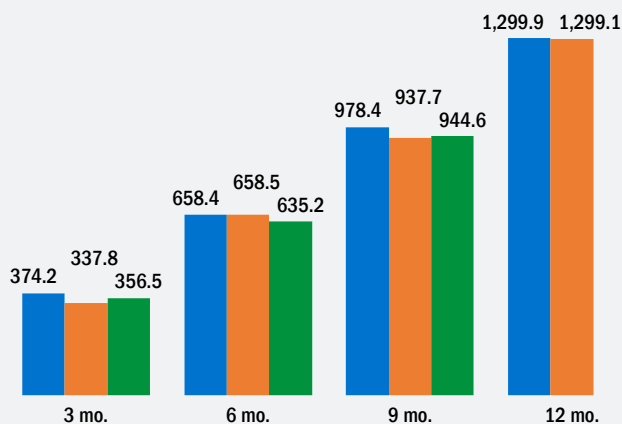
## Cost of construction works Million EUR

	3 mo.	6 mo.	9 mo.	12 mo.
2018	433.3	1,202.6	2,109.7	2,999.6
2019	526.9	1,394.7	2,405.4	3,390.5
2020	596.9	1,410.9	2,363.3	-

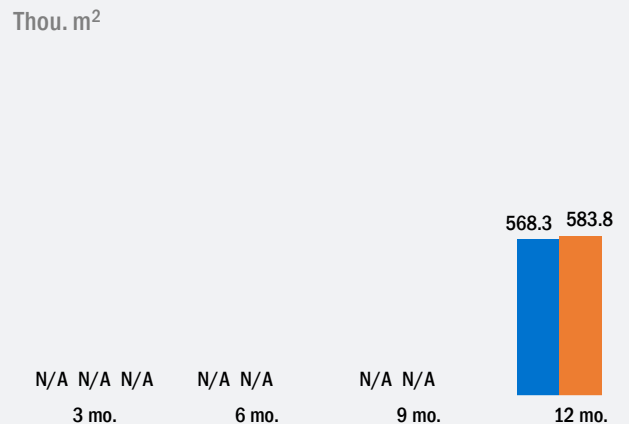
## Weighted average rate calculated according to the Central Bank of the Russian Federation RUB/EUR

	3 mo.	6 mo.	9 mo.	12 mo.
2018	69.9	71.8	73.3	74.0
2019	75.2	73.8	73.2	72.5
2020	73.2	76.4	79.6	-

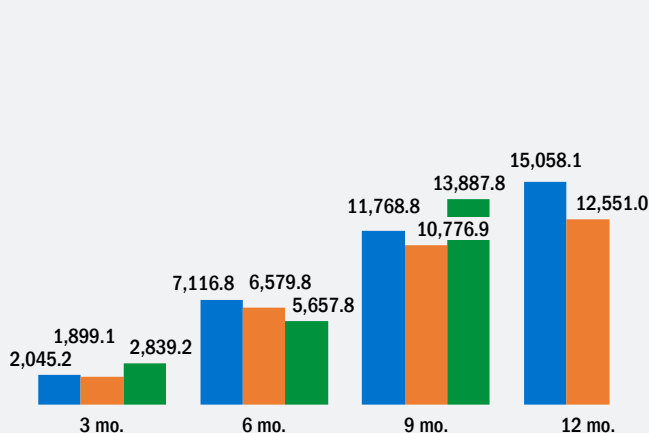
## Total area of commissioned housing Thou. m<sup>2</sup>



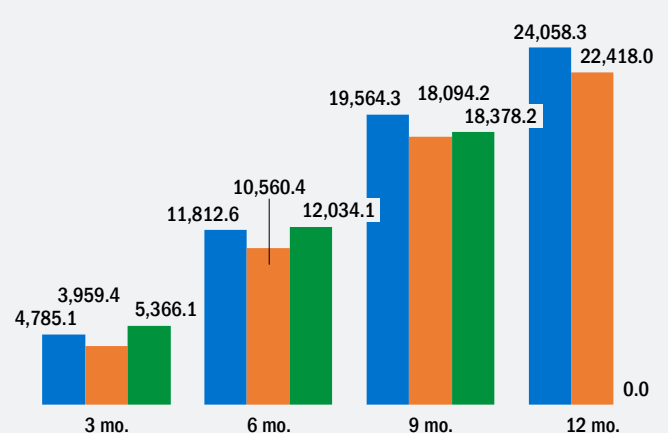
## Total area of commissioned housing in the city of Vilnius Thou. m<sup>2</sup>



## Total cost of cement import Thou. EUR



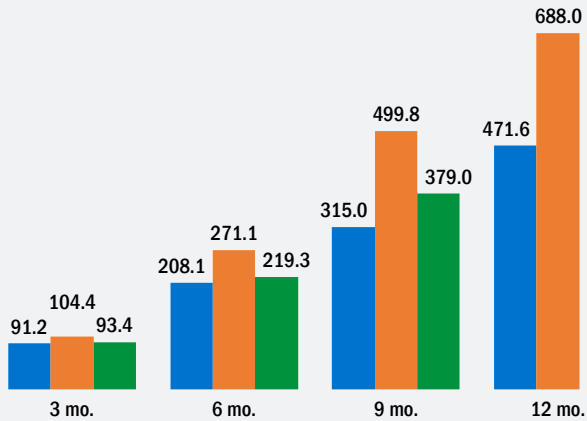
## Total cost of cement export Thou. EUR



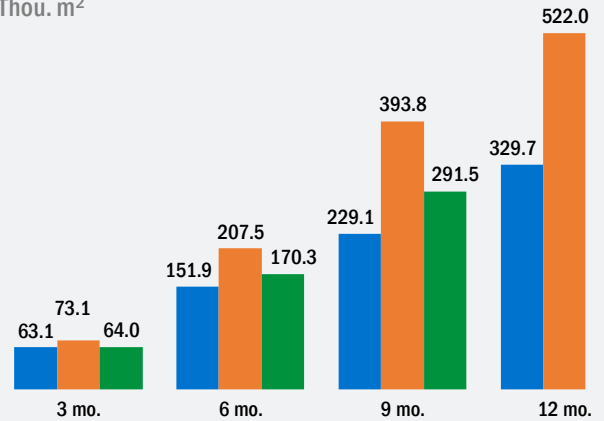


2018 2019 2020

Total area of commissioned housing  
Thou. m<sup>2</sup>



Total area of commissioned housing in the city of Kishinev  
Thou. m<sup>2</sup>



Cost of construction works  
Billion MDL

	3 mo.	6 mo.	9 mo.	12 mo.
2018	1.1	3.0	6.2	11.1
2019	1.4	4.1	7.7	13.1
2020	1.5	4.2	8.1	-

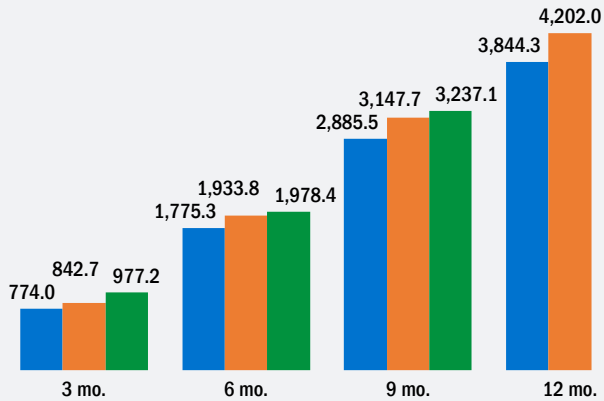
Weighted average rate calculated according to the Central Bank of the Russian Federation  
RUB/MDL

	3 mo.	6 mo.	9 mo.	12 mo.
2018	3.4	3.6	3.7	3.7
2019	3.9	3.7	3.7	3.7
2020	3.8	3.9	4.1	-

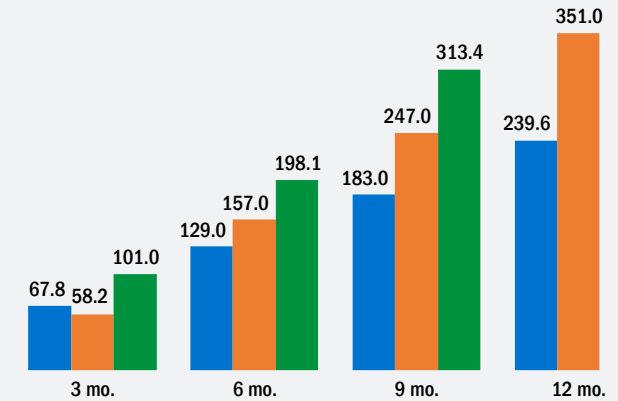


2018 2019 2020

Cement production  
Thou. t



Ready-mixed concrete production  
Thou. m<sup>3</sup>



Average cement producer prices  
TJS/1 t

	3 mo.	6 mo.	9 mo.	12 mo.
2018	490.5	493.3	495.0	495.9
2019	512.0	514.0	515.1	520.2
2020	517.9	538.7	546.8	-

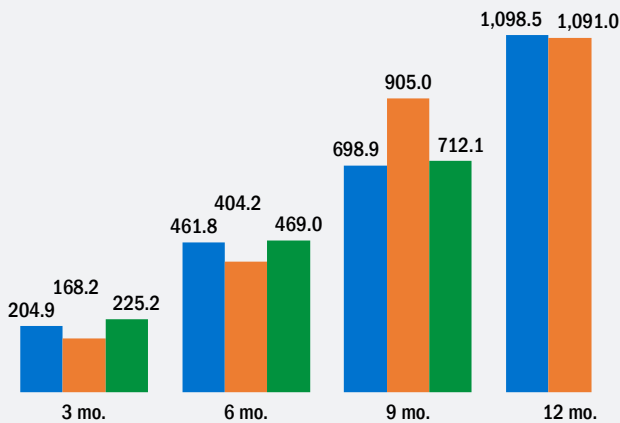
Average cement purchase prices  
TJS/1 t

	3 mo.	6 mo.	9 mo.	12 mo.
2018	823.4	799.1	793.1	781.8
2019	745.0	744.9	738.6	734.1
2020	745.4	745.3	746.6	-

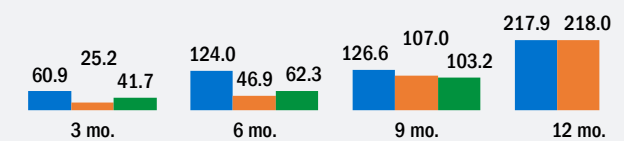
Weighted average rate calculated according to the Central Bank of the Russian Federation  
RUB/TJS

	3 mo.	6 mo.	9 mo.	12 mo.
2018	6.5	6.7	6.8	6.9
2019	7.0	6.9	6.9	6.8
2020	6.8	6.8	7.0	-

Total area of commissioned housing  
Thou. m<sup>2</sup>



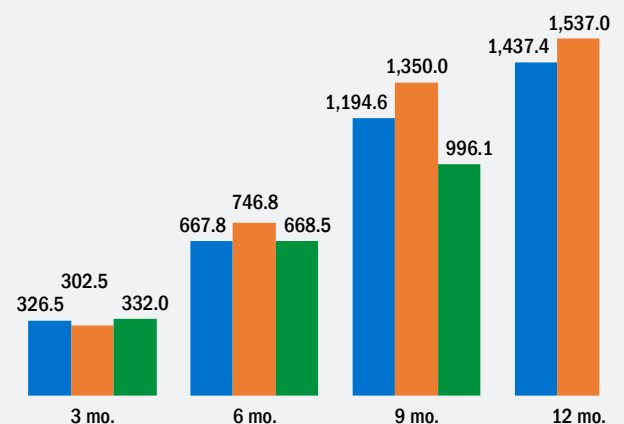
Total area of commissioned housing in the city of Dushanbe  
Thou. m<sup>2</sup>



Countries importers of cement in 2020  
Thou. t

	3 mo.	6 mo.	9 mo.	12 mo.
Uzbekistan	159.9	333.6	561.8	-
Kyrgyzstan	16.6	40.3	43.3	-
Afghanistan	155.4	294.5	390.7	-
Others	0.1	0.1	0.3	-

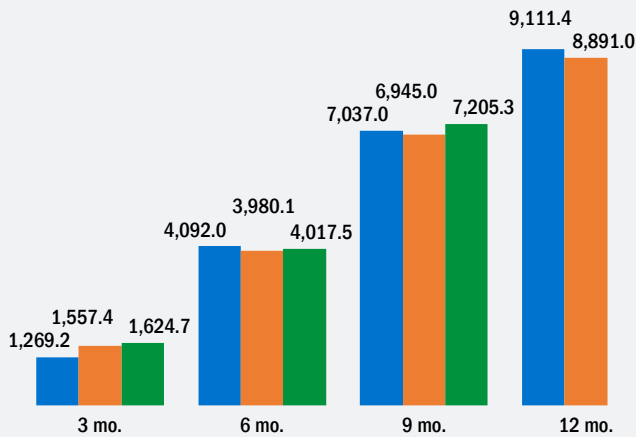
Cement export  
Thou. t



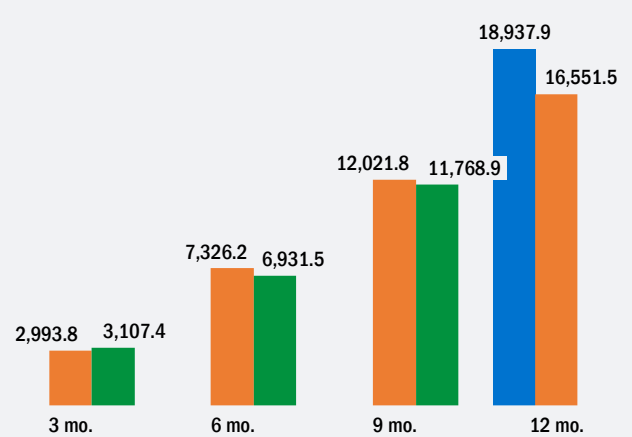


2018 2019 2020

Cement production  
Thou. t



Ready-mixed concrete production  
Thou. t



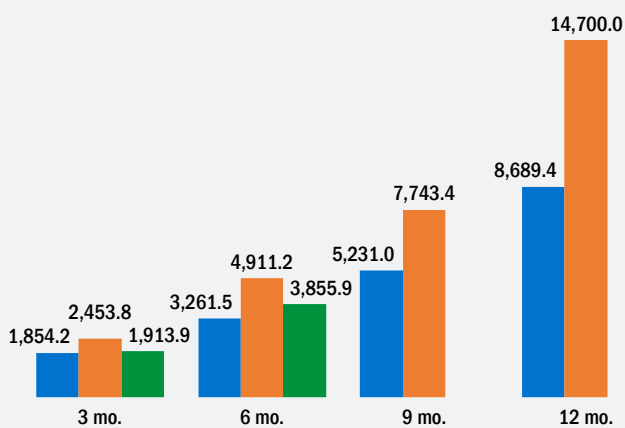
Cost of construction works  
Billion UAH

	3 mo.	6 mo.	9 mo.	12 mo.
2018	10.4	22.4	35.8	51.9
2019	11.8	25.3	40.1	59.7
2020	10.4	20.7	27.4	-

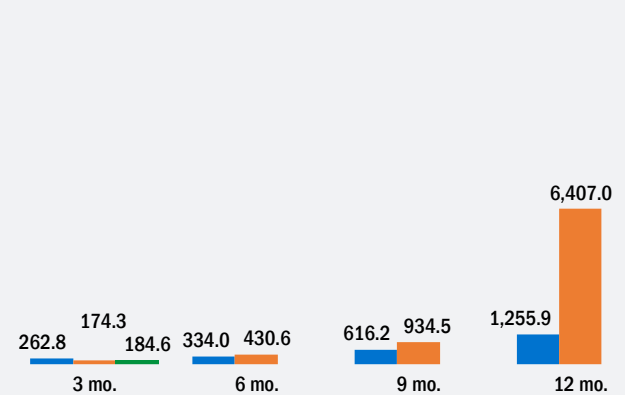
Weighted average rate calculated according to the Central Bank of the Russian Federation  
RUB/UAH

	3 mo.	6 mo.	9 mo.	12 mo.
2018	2.1	2.2	2.9	2.3
2019	2.4	2.4	2.5	2.5
2020	2.7	2.7	2.7	-

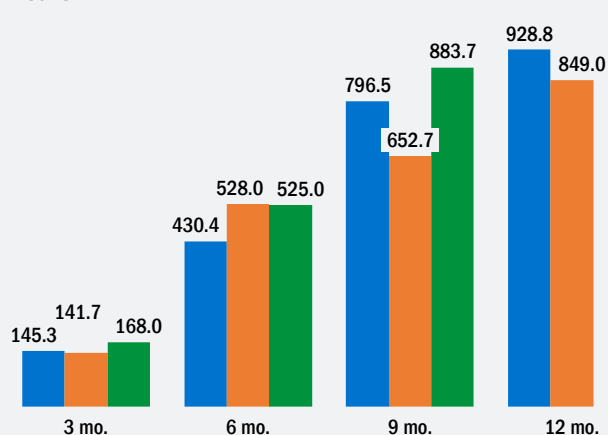
Total area of commissioned housing  
Thou. m<sup>2</sup>



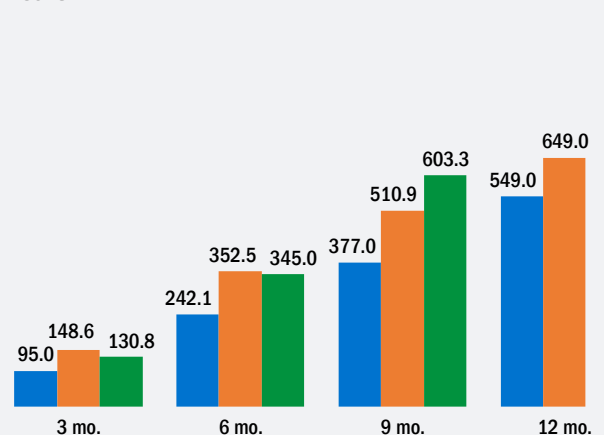
Total area of commissioned housing in the city of Kyiv  
Thou. m<sup>2</sup>



Cement import  
Thou. t



Cement export  
Thou. t

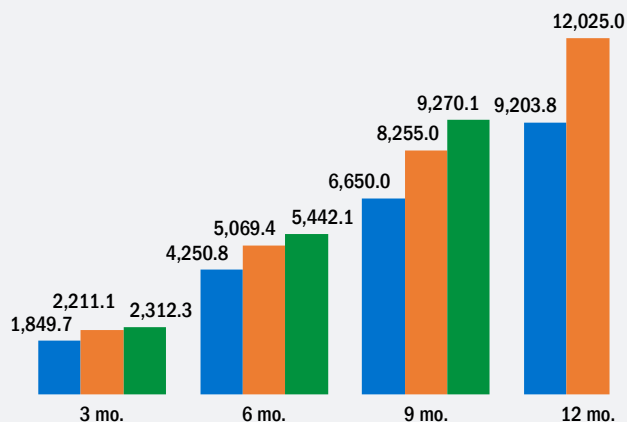




2018 2019 2020

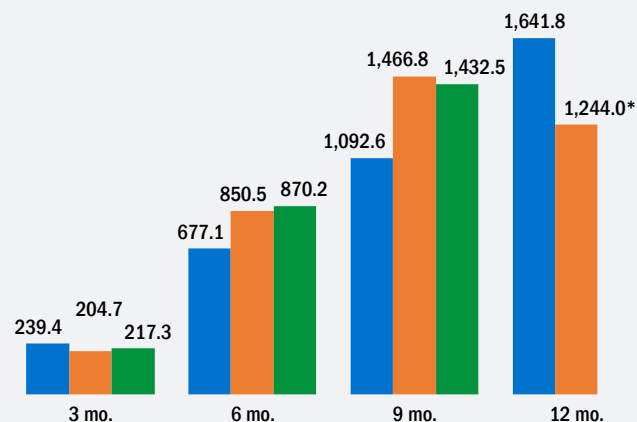
## Cement production

Thou. t



## Ready-mixed concrete production

Thou. t



\* - based on the preliminary data from 2019

## Cost of construction works

Billion UZS

	3 mo.	6 mo.	9 mo.	12 mo.
2019	11,179.7	34,351.2	50,922.2	68,854.4
2020	15,462.4	43,017.1	65,154.6	-

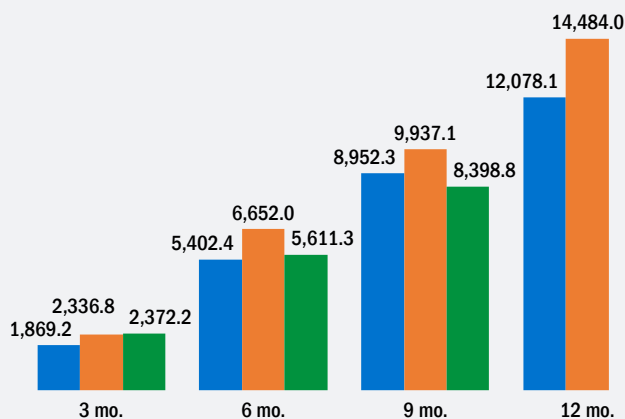
## Weighted average rate calculated according to the Central Bank of the Russian Federation

RUB/1000 UZS

	3 mo.	6 mo.	9 mo.	12 mo.
2019	7.9	7.8	7.6	7.4
2020	7.0	7.1	7.1	-

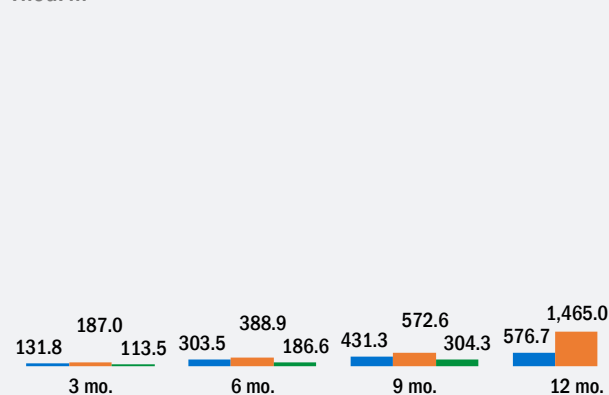
## Total area of commissioned housing

Thou. m<sup>2</sup>



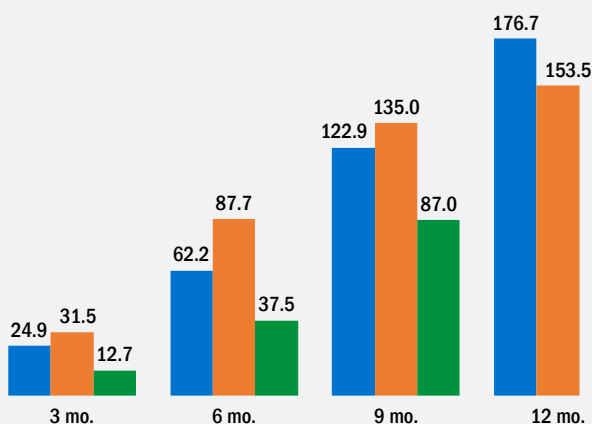
## Total area of commissioned housing in the city of Tashkent

Thou. m<sup>2</sup>



## Total cost of cement import

Million USD



## Share of import cost of construction materials by type in 2020

Percent

	3 mo.	6 mo.	9 mo.	12 mo.
Wood and wood products	52.3	47.7	48.1	-
Glass and glass products	5.8	5.8	5.3	-
Cement	5.1	7.7	10.2	-
Asbestos	2.0	2.3	2.7	-
Other construction materials	34.8	36.5	33.7	-